

What's new in

Dolphin Imaging 11.95

Welcome to Dolphin Imaging 11.95! This document provides an overview of many of the new features that have been added since version 11.9. For more in-depth information about the features mentioned here, please refer to your *Dolphin Imaging User's Guide*, available by clicking Start | Programs | Dolphin | Dolphin Manual (or for Windows 8, 8.1 and 10, pressing the Windows logo key, and typing "Dolphin Manual"). For easy reference, some sections contain corresponding user manual "chapter-page" numbers within parentheses.

Several aspects of the software have new features. To learn about these features, it is highly recommended that you read this **What's New** document from front to back... and if possible, try the features on the computer as you read. Please note that some of this documentation covers optional software modules.

C O N T E N T S :

DOLPHIN REQUIREMENTS	2	ADVANCED ORIENTATION FEATURES (PAGE).....	5
OVERVIEW OF THE TWO VERSIONS (3-1)	2	AIRWAY PATH BOUNDARY FEATURE (PAGE).....	5
DOLPHIN STANDARD VERSUS DOLPHIN PREMIUM (3-1)	2	DOLPHIN 3D SURGERY (CHAP. 31)	5
GENERAL / IMAGING PLUS ENHANCEMENTS (PARTS II AND III)	2	TOOLBAR BUTTON FOR 3D SURGERY (PAGE).....	5
SUBMIT TO BEAMREADERS BUTTON (PAGE)	2	ABILITY TO EXPORT 3D SURGERY SURFACES COMBINED OR SEPARATE (PAGE).....	5
EXPORT/IMPORT CAPTURE SEQUENCES (PAGE)....	3		
KEEP MULTIPLE DATABASE "PRE-BACKUPS" (PAGE)	3		
CEPH TRACING AND ANALYSIS AND TREATMENT SIMULATION (PART V)	3		
ABO CEPH TRACING ENHANCEMENTS (PAGE)	3		
NEW 2D "MODEL ANALYSIS" (PAGE)	3		
CEPH ANALYSIS NORM CITATIONS (PAGE).....	3		
ADD U1-PP ANGLE TO 2D VTO GOALS CHART (PAGE).....	4		
ADD "TOOTH CHART" MENU ITEM (PAGE)	4		
3D STUDY MODEL MODULE (PART IX)	4		
ABILITY TO IMPORT CEREC .DIXD FILES (PAGE) .	4		
ABILITY TO DISCARD COLOR WHEN IMPORTING COLOR STUDY MODELS (PAGE).....	4		
ABILITY TO TURN STUDY MODEL COLOR ON AND OFF (PAGE).....	4		
ABILITY TO EXPORT SURFACES COMBINED OR SEPARATE (PAGE).....	4		
ABILITY TO EXPORT SURFACES IN CURRENT ORIENTATION/OCCCLUSION POSITION (PAGE).....	4		
DOLPHIN 3D (PART IX)	4		
NEW 3D STUDY MODEL FEATURES (PAGE).....	4		
"DOWNSIZE AND LOAD" PROCESS (PAGE).....	5		

Dolphin Requirements

At Dolphin, we want to take advantage of the latest Windows technologies. Some of these technologies do not work under obsolete Windows operating systems (2000, XP, Server 2003, etc.). Therefore, Dolphin 11.95 is unsupported under versions of Windows earlier than Windows Vista. Dolphin 11.95 supports Windows Vista, 7, 8, 8.1, 10, 2008 Server, or 2012 Server. Standalone or server installs require Windows 7 SP1, Server 2008 R2, or above. For all operating systems, Dolphin supports both 32- and 64-bit versions, and supports Business, Pro, Enterprise, and Ultimate editions. Dolphin recommends Windows 7, 8, or 8.1 or 10. Note, that Microsoft ended support for XP on April 18, 2014, and did likewise with Server 2003 on July 14, 2015, so we have dropped these OSs.

The Dolphin 3D system requires 4GB of RAM, and works best with 8GB. Also, the fastest and highest quality rendering modes of Dolphin 3D require a 512 MB or more video card, based on one of these DirectX graphics engines or better: NVIDIA 87400 GS, ATI HD 5450 or Intel HD4600. See www.dolphinimaging.com for additional requirements.

Overview of the Two Versions (3-1)

Dolphin Standard versus Dolphin Premium (3-1)

Starting with Dolphin version 6.5, and including versions 6.7–11.95, we have split the Dolphin product into two levels: The standard Dolphin and the Premium full database version of Dolphin. The first two benefits we introduced with this Premium version were storage of far more detailed patient information and a new Dolphin Letter System that extracts from this rich pool of data.

Since that time, we have developed many new products and features that require Dolphin Premium, such as our Dolphin Management product, AnywhereDolphin.com, capture/storage/playback of .AVI movie clips, multi-patient archive save and load, Dolphin 3D, Dolphin 3D Surgery, Dolphin Aquarium, Dolphin Mobile, and My Orthodontist.

Some of the new features in 11.95 compared to 11.9 are Premium-related. But non-Premium customers will see new features in 11.95 as well.

For customers with a service club contract, Dolphin now offers the upgrade from standard to premium for free, and with no added support fees! If you are still running the standard version, please take advantage of this offer.

General / Imaging Plus Enhancements (Parts II and III)

This section describes new features that you will see regardless of which optional modules you own.

Submit To BeamReaders Button (page)

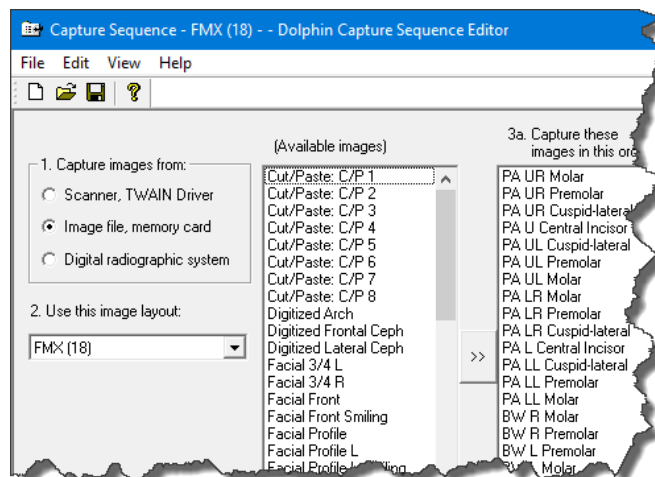
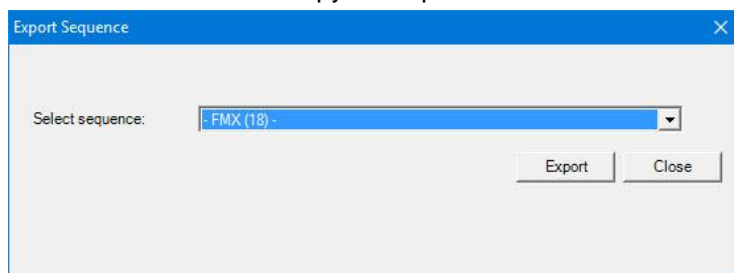


Version 11.95 adds a new “Submit to BeamReaders” button, that allows the user to transfer the current patient’s record, along with work-order notes, to BeamReaders for a radiology report and/or image portfolio. See www.beamreaders.com for more information about the services they provide.

A screenshot of a software dialog box titled 'BeamReaders'. It contains several sections: 1. Checkboxes for 'Send case to BeamReaders for a Radiology Report (\$75)' (checked) and 'Rush Report' (checked), and 'Send case to BeamReaders for an Image Portfolio (\$55)' (unchecked) and 'Rush Portfolio' (unchecked). 2. A link to 'www.BeamReaders.com'. 3. A section titled 'TELL US ABOUT YOUR PATIENT' with a 'Study Purpose' section containing checkboxes for 'Airway' (checked), 'Impaction' (unchecked), 'Orthodontics' (unchecked), 'Sinus' (checked), 'General' (checked), 'Implant' (unchecked), 'Pathology' (unchecked), and 'TMD/Pain' (unchecked). 4. A 'Doctor's Notes' section with a text area containing the text 'I type my specific work order notes here...'. 5. A 'Requested Timepoint' dropdown menu showing '[INITIAL 6, 2/19/2015]'. 6. A 'Referring Doctor' dropdown menu showing 'Lemchen, Marc S.'. 7. A checkbox for 'I agree to place this order with BeamReaders and allow them access to the patient's file and scan. BeamReaders may contact me about this order.' (checked). 8. 'Place Order' and 'Cancel' buttons at the bottom right.

Export/Import Capture Sequences and Layouts (page)

If a user creates a custom image capture sequence, they can now export that capture sequence and its associated layout, and provide them to a colleague, who can import them into their own copy of Dolphin.



Keep Multiple Database “Pre-backups” (page)

For disaster recovery (hard drive failure, theft, etc.) Dolphin mandates that users keep backups of their data. A backup consists of two components: the images in the WORKING folder, along with a “pre-backup” file of the SQL database. Dolphin Imaging historically creates a SQL database “pre-backup” file once a day, overwriting the prior day’s pre-backup file. Version 11.95 adds the ability for the user to select a count of rotating backups. So, for example, the user can choose to keep copies of the 30 most recent daily SQL database pre-backup files.

Ceph Tracing and Analysis and Treatment Simulation (Part V)

ABO Ceph Tracing Enhancements (page)

At the request of the American Board of Orthodontics, we are adding

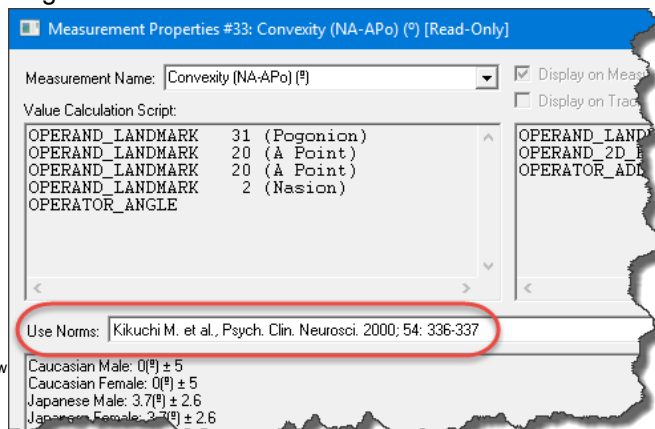
- More auto-draw structures to our digitize setup screen
- More gray calculated landmarks to our existing auto-draw structures, so that they can be more accurately aligned to the patient’s anatomy
- Ability to assign a custom structure to a “region” so that it can be included in regional superimpositions

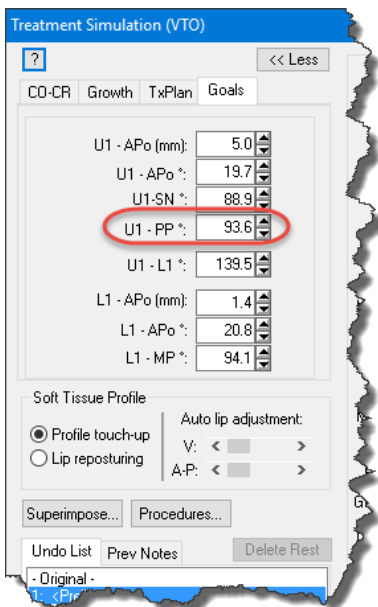
New 2D “Model Analysis” (page)

The Dolphin Ceph Tracing module has historically had several arch length analyses. Version 11.95 adds a new study model analysis.

Ceph Analysis Norm Citations (page)

Historically, if you examined a ceph analysis in the Custom Analysis Editor and viewed the properties of a measurement, you would see the set of norms labeled something like “Norm set 0”. We have started a campaign of adding bibliographic citations to our norms, so you can see the exact book or journal page source of those norms. For example, the norms for the Facial Angle measurement in the Downs analysis now say: “Downs, W. 'Variations in Facial Relationships' AJO 34.10 (1948): 812-40. Web.”. We are going through our analyses methodically, adding norm citations. Version 11.95 has some citations, and more will continue to be added over time.



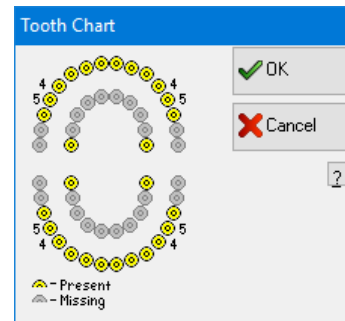


Add U1-PP Angle to 2D VTO Goals Chart (page)

We have added the “Upper incisor to Palatal Plane” measurement to the 2D Treatment Simulation module’s Goals Panel.

Add “Tooth Chart” Menu Item (page)

Dolphin Imaging customers have historically had access to edit a patient’s tooth chart via the patient details screen. This tooth chart is especially useful for calculating arch length discrepancy in the 2D Treatment Simulation module after extraction/bridging/stripping/etc. But Dolphin Management customers have a different patient details screen, without that imaging tooth chart. So in 11.95 we have added a menu item to access the imaging tooth chart via Tools | Tooth Chart.



3D Study Model Module (Part IX)

Ability to Import CEREC .DIXD Files (page)

Version 11.8 added CEREC integration for acquiring CEREC digital study models directly from a CEREC machine into Dolphin. Version 11.95 adds the ability to import CEREC’s .DIXD format files, outside of the integration.

Ability to Discard Color when Importing Color Study Models (page)

Version 11.9 added the ability to import study models in .OBJ color format. Version 11.95 adds the ability to optionally discard the color information upon import. This is useful for customers who don’t want/need the color, or who are running out of memory when importing high-memory-usage color scans.

Ability to Turn Study Model Color On and Off (page)

In Version 11.9, digital models that had been imported in color were always shown in color. Version 11.95 adds the ability to turn the color display on and off at will.

Ability to Export Surfaces Combined or Separate (page)

When viewing multiple surfaces, and clicking the “Export” button, the user can now choose whether to export all of the selected surfaces combined into one export file, or whether to export each selected surface into its own separate file. This is useful if the user plans to import the Dolphin-generated surfaces into other software, such as for 3D printing.

Ability to Export Surfaces in Current Orientation/Occlusion Position (page)

When exporting models from inside the Arch Models adding/editing window, there is a new option to export the arches in their current occlusion/orientation position. This is useful if the user plans to import Dolphin-generated surfaces into other software.

Dolphin 3D (Part IX)

New 3D Study Model Features (page)

Since the Dolphin3D module includes the 3D Study Models module, customers who purchase Dolphin3D will get all of the new 3D Study Model features listed above.

“Downsize and Load” Process (page)

Dolphin has historically had the ability to downsize large high-res DICOM volumes to a more workable size, and then save the downsized DICOM to a file, and then load the downsized file into Dolphin3D. Version 11.95 adds the ability to “downsize and load” all in one easy step.

Advanced Orientation Features (page)

11.95 adds very sophisticated new 3D orientation features. These are located in the new “Cant/Roll”, “Yaw”, and “Pitch” tabs of the orientation screen.

Airway Path Boundary Feature (page)

Historically, Dolphin3D did airway studies by having the user draw a boundary, drop in a “seed” point, and the software would fill the airway within the boundary. Version 11.9 added an alternate airway analysis method, in which the user would simply draw a curved path, following the shape of the airway, and the software would fill and measure and color-code the airway along that path. But sometimes the airway air-space can be connected to the air-space above the tongue, so the airway would flow into that area. So version 11.95 adds the ability to draw a boundary around the curved path airway, to constrain it.

Dolphin 3D Surgery (Chap. 31)

Toolbar Button for 3D Surgery (page)

Historically, the 3D Surgery module has been hidden inside the “Tools” menu of Dolphin3D. Now, for convenience, there is a new button right on the toolbar for entering the 3D Surgery module.

Ability to Export 3D Surgery Surfaces Combined or Separate (page)

Similar to the new feature in the main 3D Study Model/Dolphin3D screen, when viewing multiple surfaces in the “present” tab of 3D surgery and clicking the “Export” button, the user can now choose whether to export all of the selected surfaces combined into one export file or export each selected surface into its own separate file. This is useful if the user plans to import Dolphin-generated surfaces into other software, such as for 3D printing.